



July 2024

Dear Resident,

### Help Willingboro MUA Identify Service Line Materials

In July 2021, New Jersey passed Assembly Bill No. 5343, which requires all water systems to inventory and replace all lead service lines. Although the majority of the water service lines in Willingboro are copper, this law also requires the replacement of customer-owned galvanized steel and lead lines. As a required part of this bill, and to get the most accurate inventory possible of the customer portion of the service line, the WMUA will need to collect information about certain customers' home plumbing materials. This collection can be done in just a few short minutes by looking at your homes service line, or a quick in-person visit from a WMUA representative.

#### **Locating your water shut off valve:**

The main shut off valve (the lowest valve), is typically located under your kitchen sink or located in close proximity to your heater. **Please take a photo of the piping.** If pipes are very rusty, painted, dirty, or show signs of corrosion, please clean or scratch a small section of the pipe before taking a photo. Please use proper lighting.

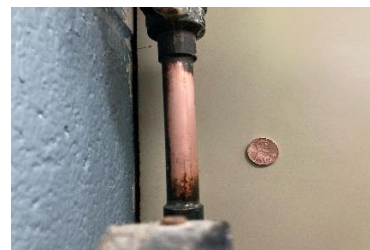
#### **Reporting your service line materials:**

- Self reporting: Email the WMUA at [servicelineinventory@wmua.info](mailto:servicelineinventory@wmua.info). Please make your home's address the subject line. Be sure to include the photo of your home's service line. Also include contact information such as your name and phone number.
- To request an on-site verification by our staff or if you have any questions: Please reach out to [servicelineinventory@wmua.info](mailto:servicelineinventory@wmua.info) for assistance.

#### **How to identify service line materials:**

You can scratch metal service lines lightly with a key or screwdriver that are aged or discolored to help determine the material. Using a magnet can also help determine service line as some materials are magnetic.

- **Copper** lines are NOT magnetic. Copper will resemble a penny.



- **Plastic** lines can come in several different colors. Do not scratch plastic lines.



- **Galvanized Steel** lines ARE magnetic and commonly have threaded ends. If your service line is gray in color and a magnet sticks to it, your line is galvanized.



- **Lead** lines are gray or silver in color. Lead is a soft metal and can easily be scratched. Lead lines are NOT magnetic.



***Your Cooperation is greatly appreciated.***

Please contact the WMUA to provide the details of your service line.